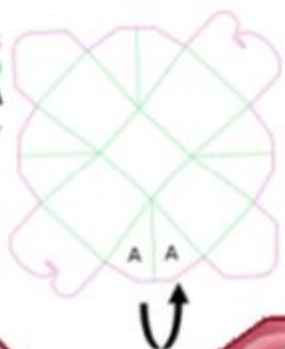


Cut lines shown in **Pink**
Score lines shown in **Green**
Dot glue on unprinted side at A
Fold A's together



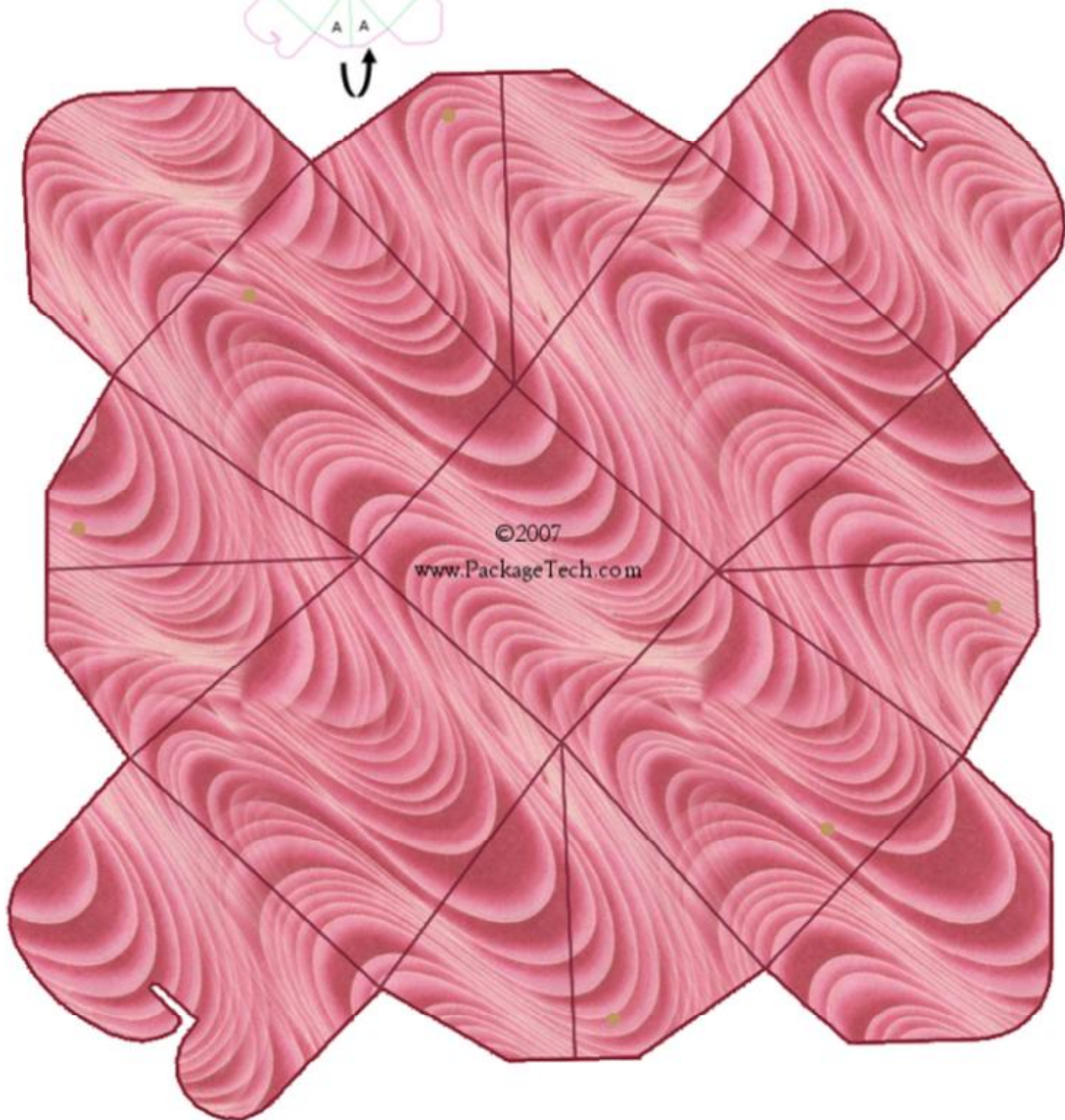
Chinese Take Out Style Box

Score your lines well

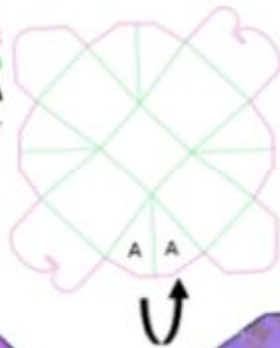
Cut out box

We recommend using card stock for this box

Fold along all your score lines



Cut lines shown in **Pink**
Score lines shown in **Green**
Dot glue on unprinted side at A
Fold A's together



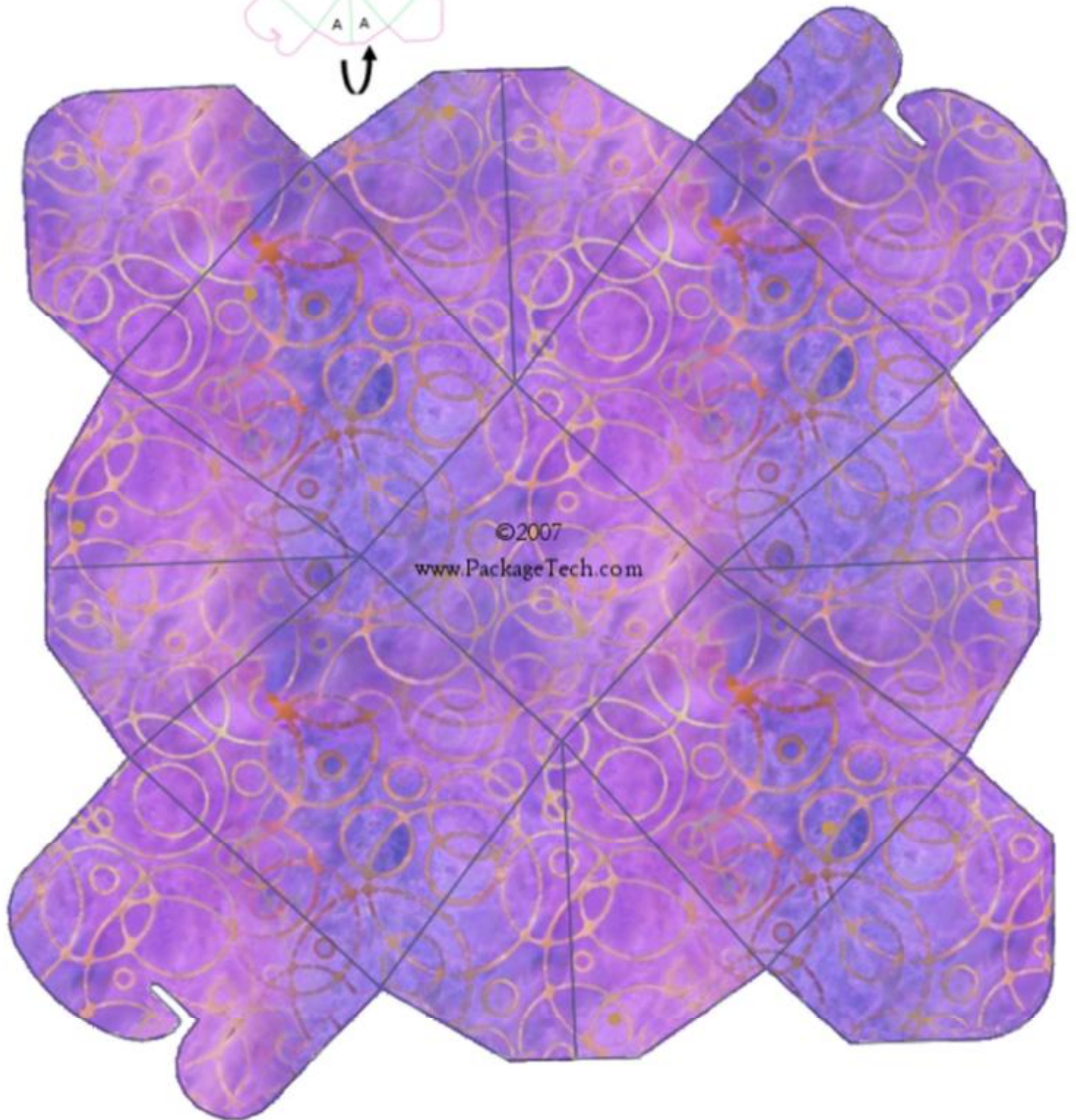
Chinese Take Out Style Box

Score your lines well

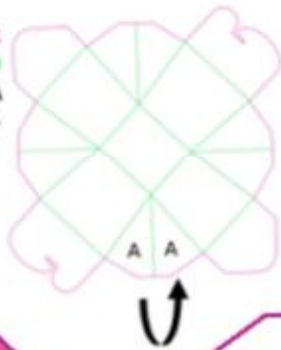
Cut out box

We recommend using card stock for this box

Fold along all your score lines



Cut lines shown in **Pink**
Score lines shown in **Green**
Dot glue on unprinted side at **A**
Fold A's together



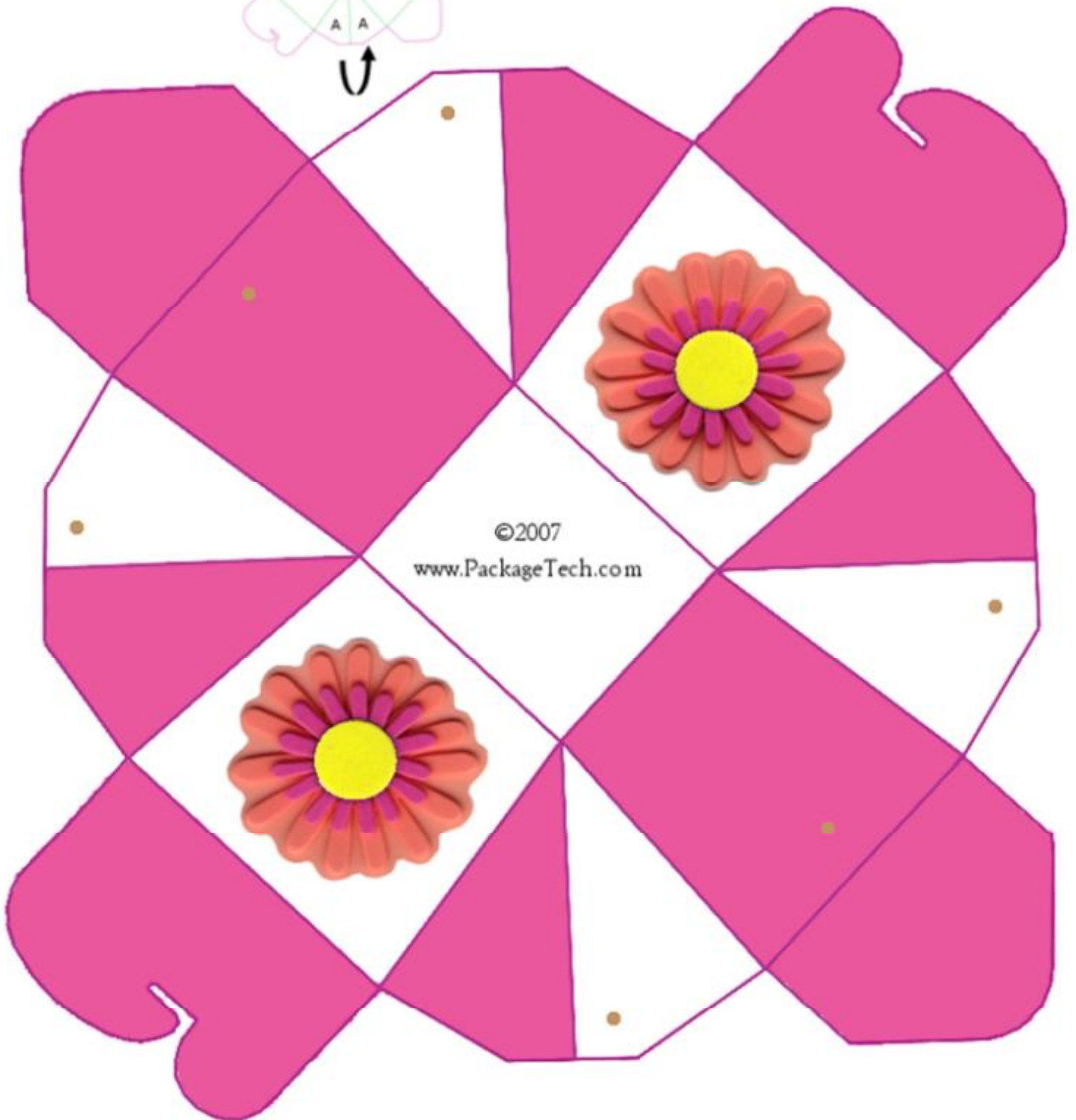
Chinese Take Out Style Box

Score your lines well

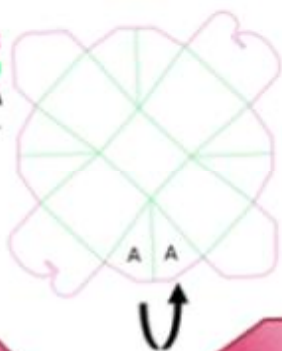
Cut out box

We recommend using card stock for this box

Fold along all your score lines



Cut lines shown in **Pink**
Score lines shown in **Green**
Dot glue on unprinted side at A
Fold A's together



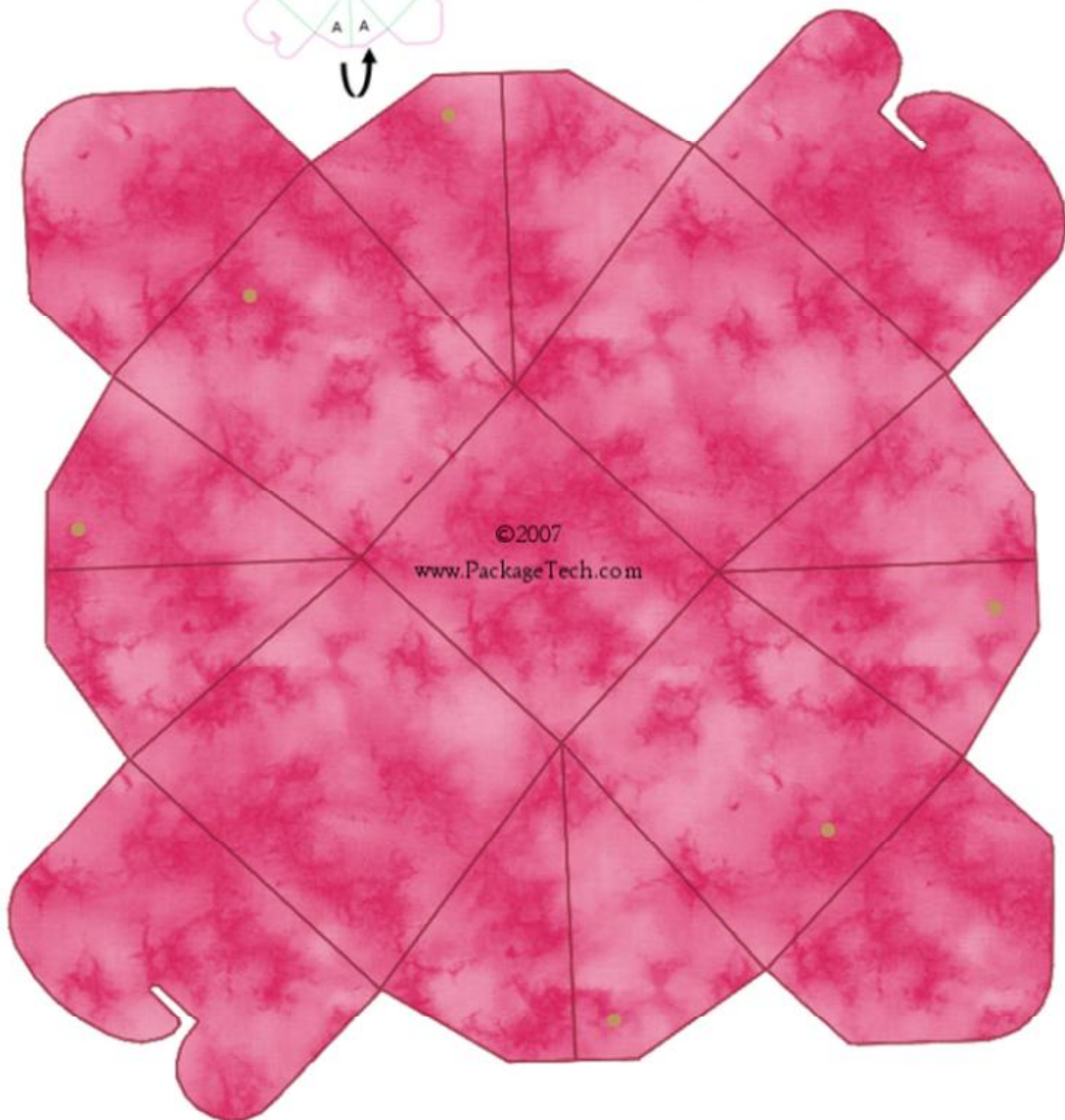
Chinese Take Out Style Box

Score your lines well

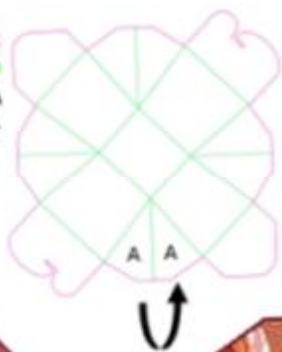
Cut out box

We recommend using card stock for this box

Fold along all your score lines



Cut lines shown in **Pink**
Score lines shown in **Green**
Dot glue on unprinted side at **A**
Fold A's together



Chinese Take Out Style Box

Score your lines well

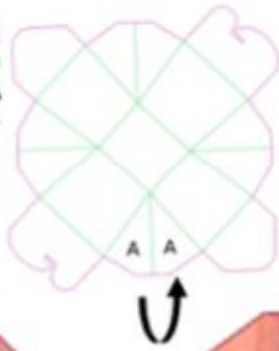
Cut out box

We recommend using card stock for this box

Fold along all your score lines



Cut lines shown in **Pink**
Score lines shown in **Green**
Dot glue on unprinted side at **A**
Fold **A**'s together



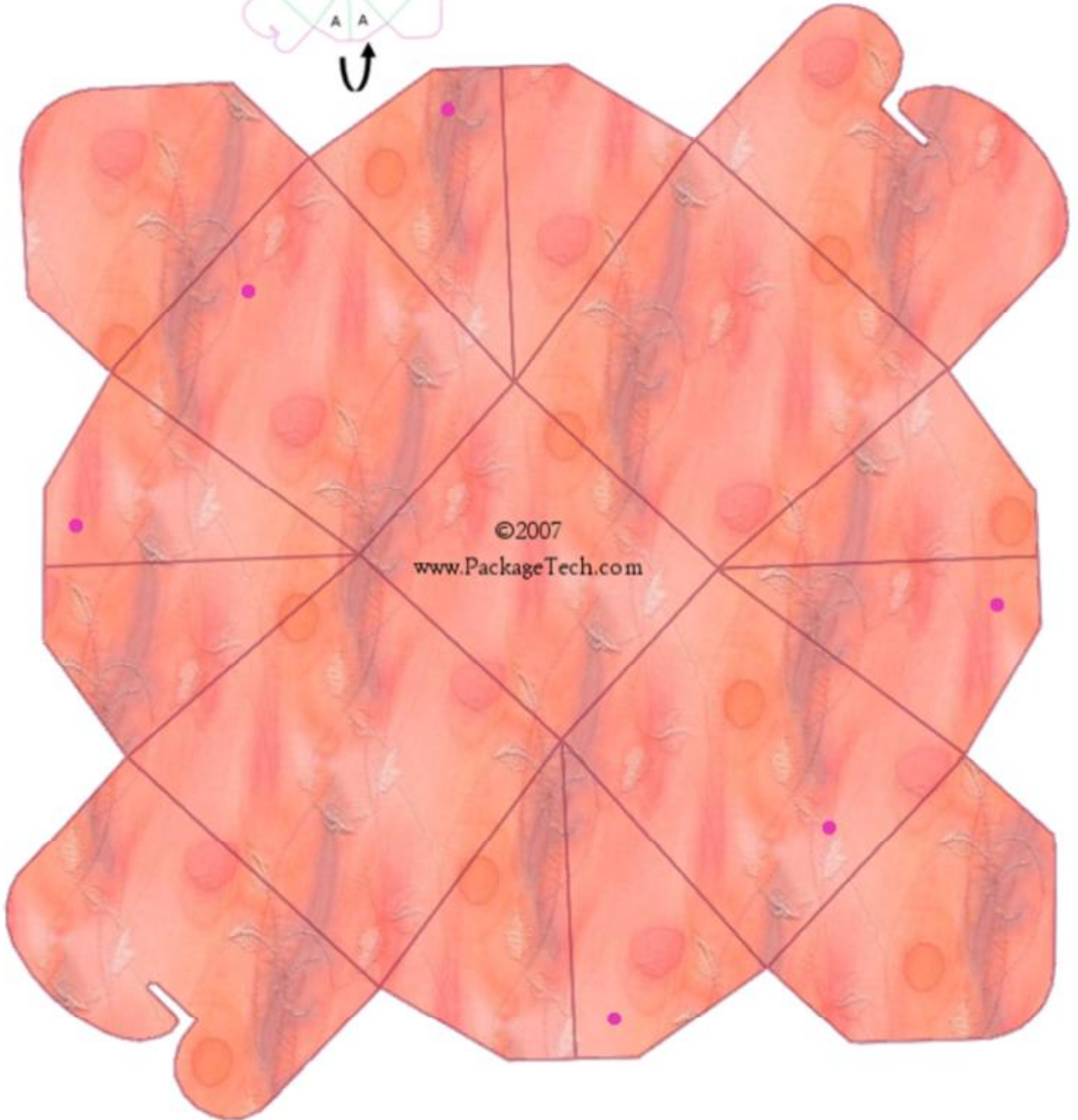
Chinese Take Out Style Box

Score your lines well

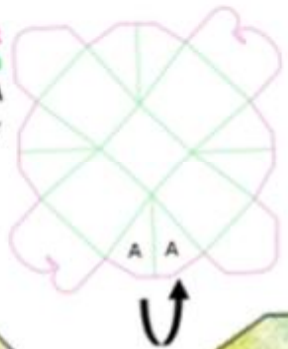
Cut out box

We recommend using card stock for this box

Fold along all your score lines



Cut lines shown in **Pink**
Score lines shown in **Green**
Dot glue on unprinted side at **A**
Fold **A**'s together



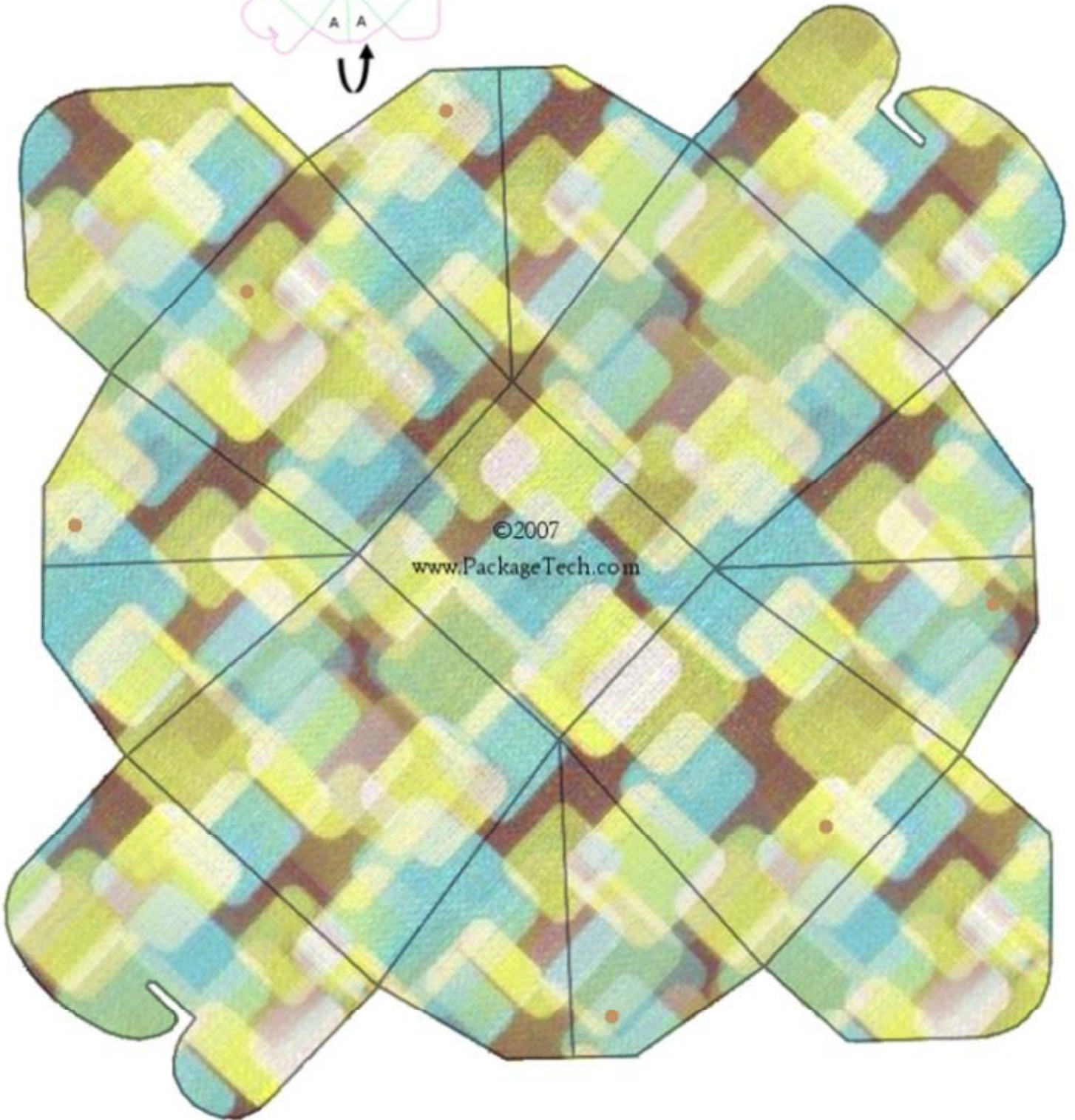
Chinese Take Out Style Box

Score your lines well

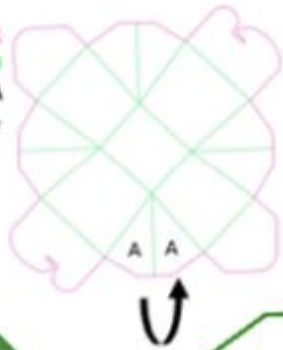
Cut out box

We recommend using card stock for this box

Fold along all your score lines



Cut lines shown in **Pink**
Score lines shown in **Green**
Dot glue on unprinted side at **A**
Fold A's together



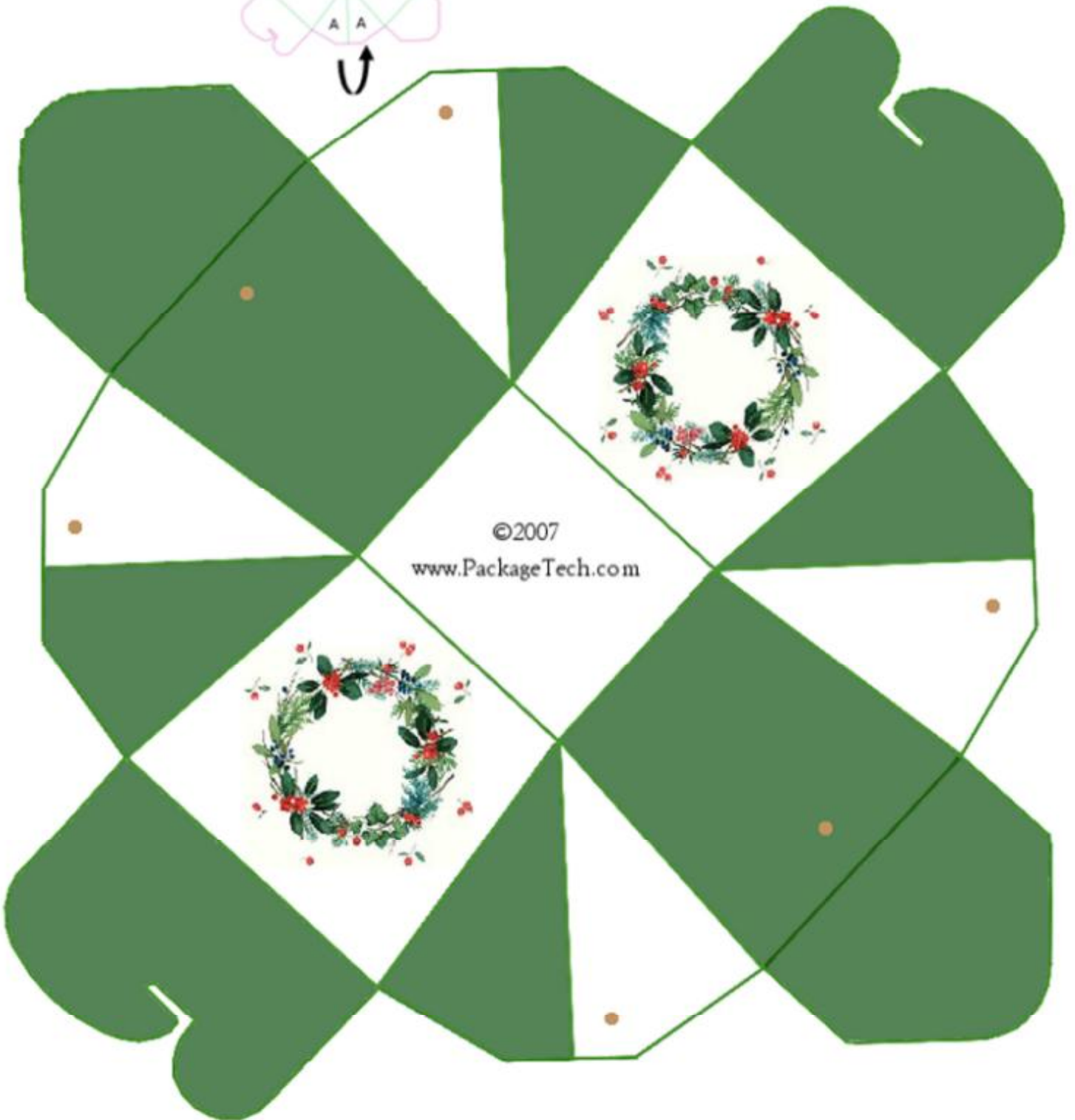
Chinese Take Out Style Box

Score your lines well

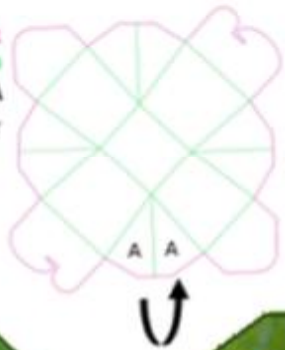
Cut out box

We recommend using card stock for this box

Fold along all your score lines



Cut lines shown in **Pink**
Score lines shown in **Green**
Dot glue on unprinted side at A
Fold A's together



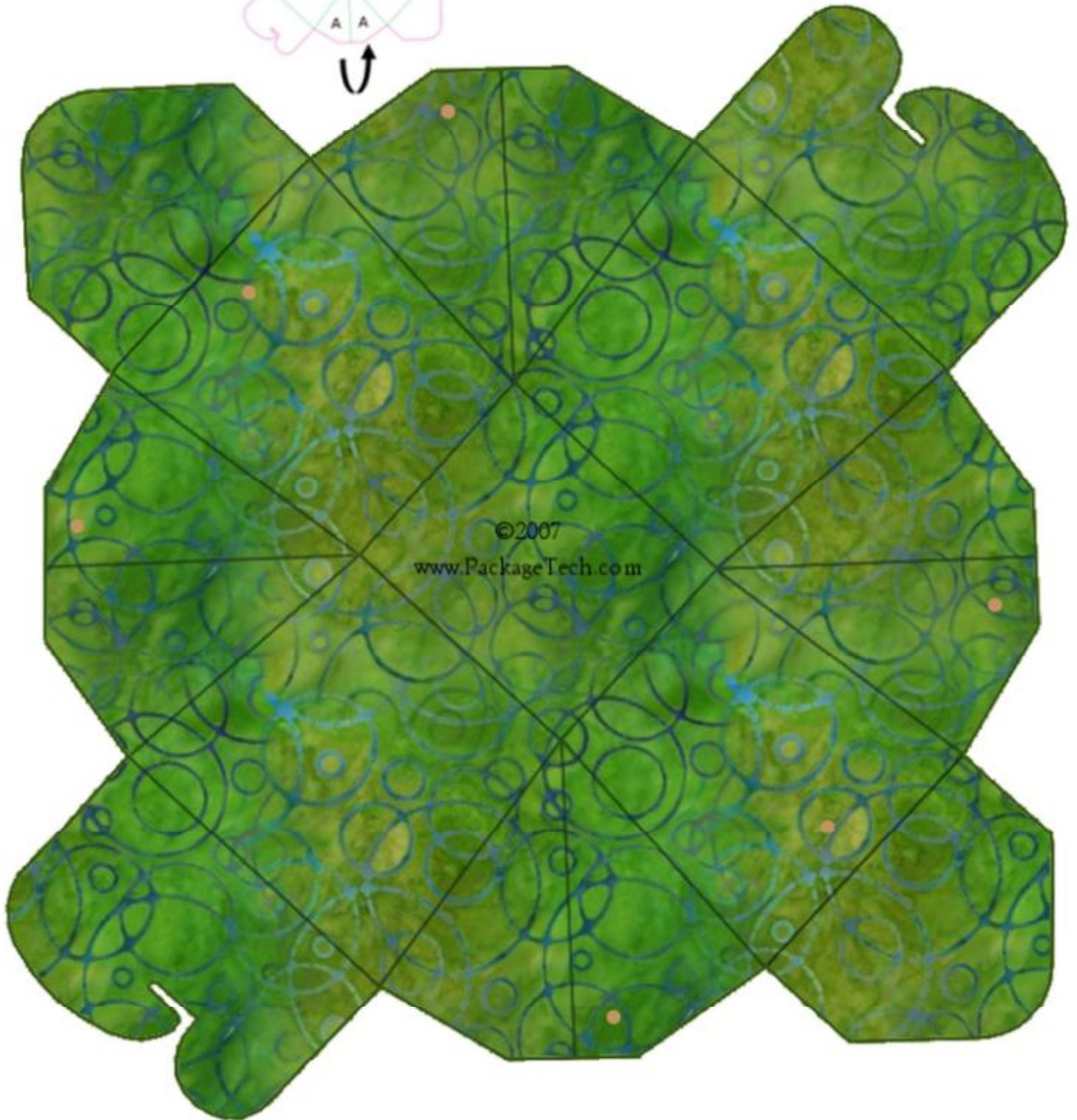
Chinese Take Out Style Box

Score your lines well

Cut out box

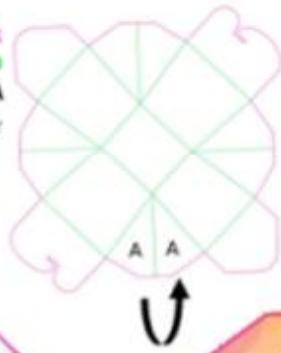
We recommend using card stock for this box

Fold along all your score lines



©2007
www.PackageTech.com

Cut lines shown in **Pink**
Score lines shown in **Green**
Dot glue on unprinted side at A
Fold A's together



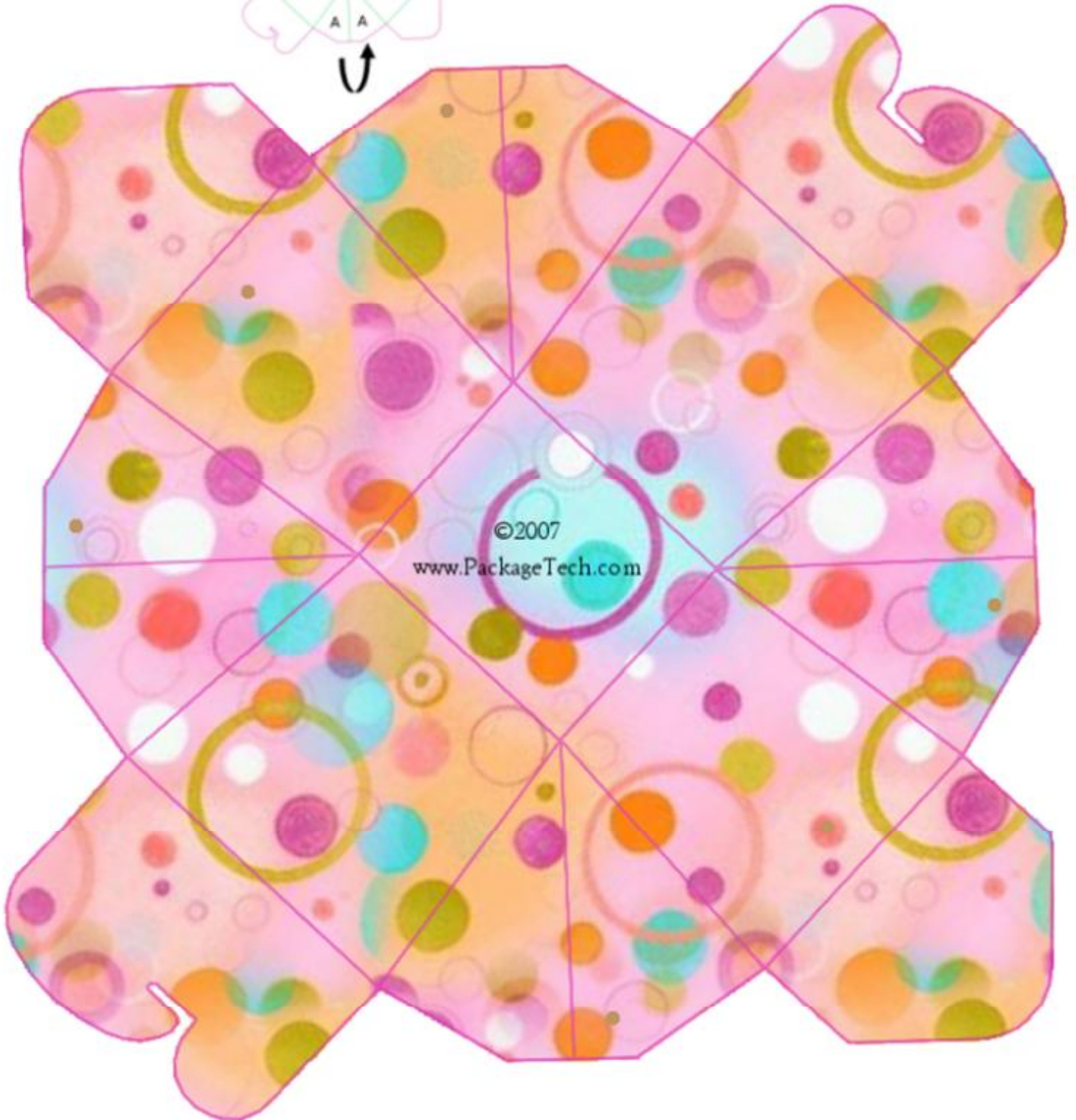
Chinese Take Out Style Box

Score your lines well

Cut out box

We recommend using card stock for this box

Fold along all your score lines



©2007
www.PackageTech.com