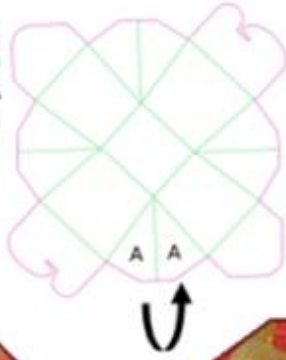
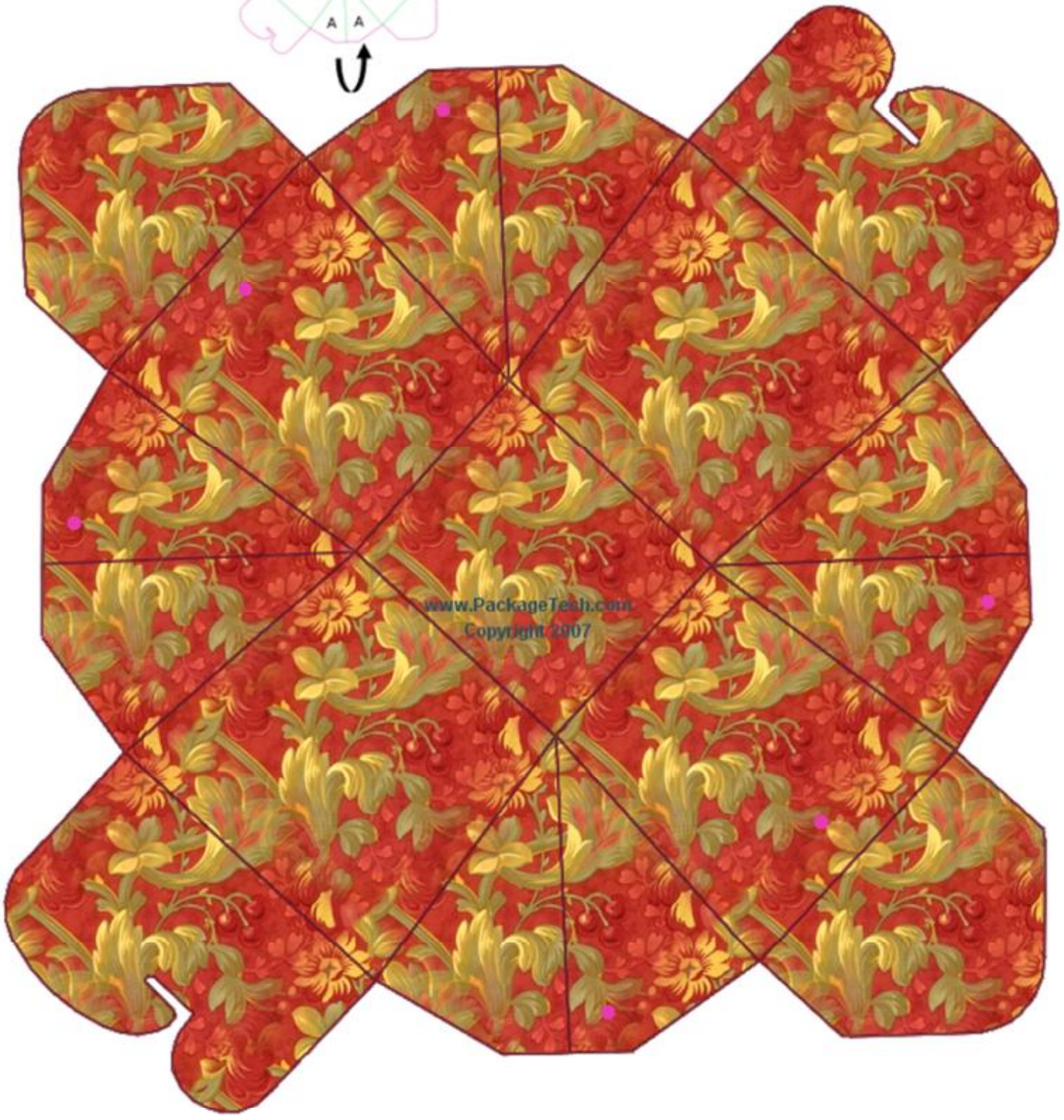


Cut lines shown in **Pink**
Score lines shown in **Green**
Dot glue on unprinted side at **A**
Fold A's together



Chinese Take Out Style Box

- Score your lines well
- Cut out box
- We recommend using card stock for this box
- Fold along all your score lines



Chinese Take Out Style Box

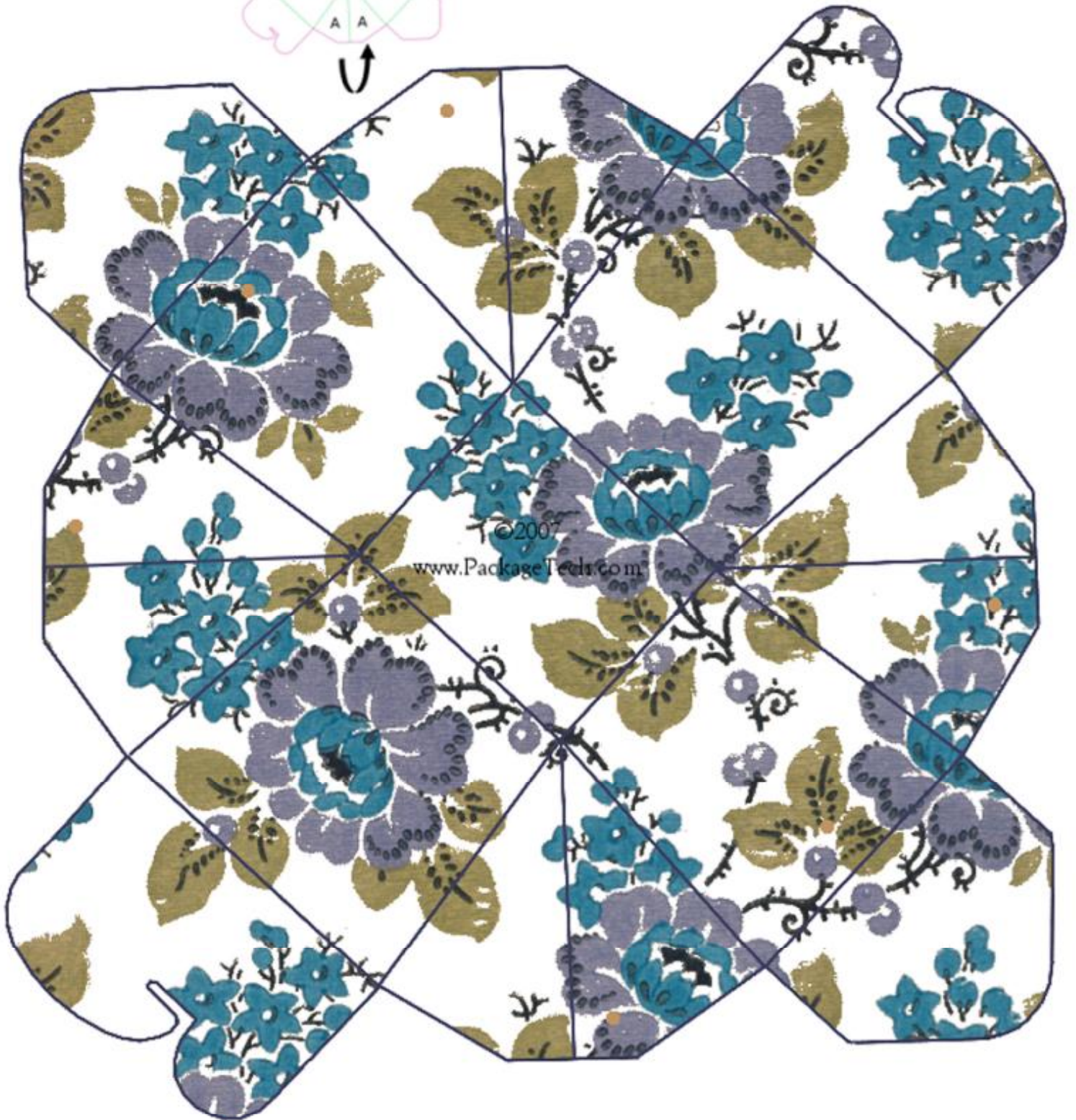
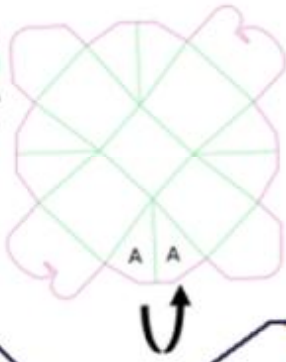
Score your lines well

Cut out box

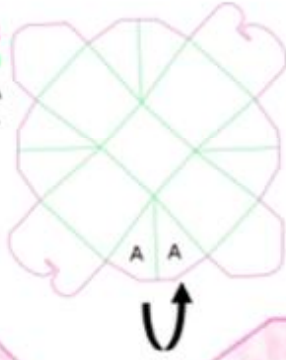
We recommend using card stock for this box

Fold along all your score lines

Cut lines shown in **Pink**
Score lines shown in **Green**
Dot glue on unprinted side at A
Fold A's together



Cut lines shown in **Pink**
Score lines shown in **Green**
Dot glue on unprinted side at **A**
Fold A's together



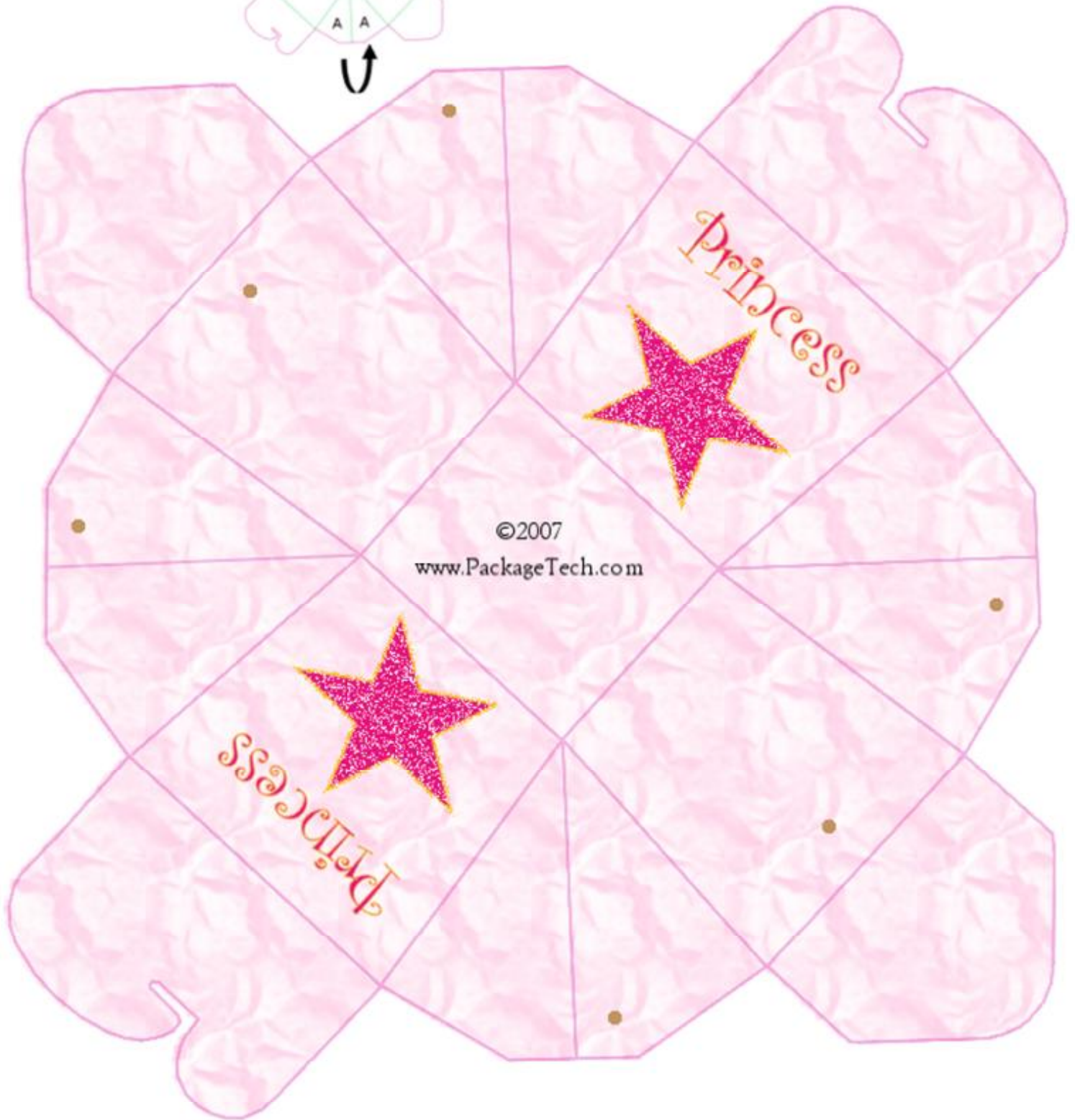
Chinese Take Out Style Box

Score your lines well

Cut out box

We recommend using card stock for this box

Fold along all your score lines



Chinese Take Out Style Box

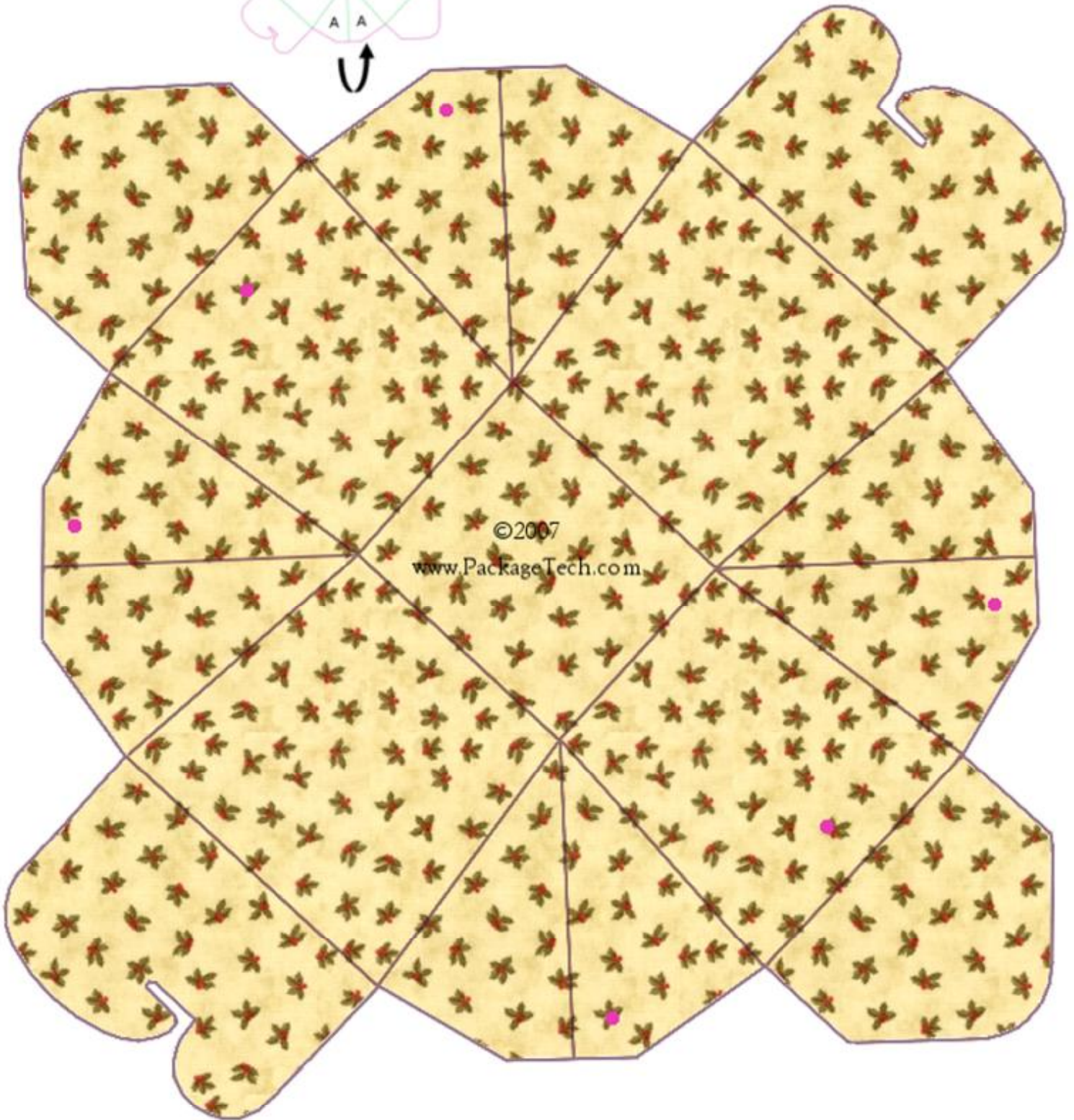
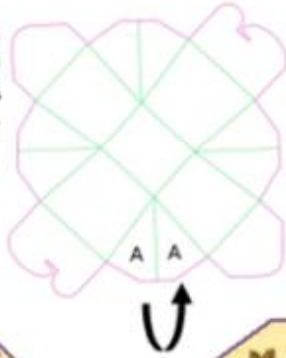
Score your lines well

Cut out box

We recommend using card stock for this box

Fold along all your score lines

Cut lines shown in **Pink**
Score lines shown in **Green**
Dot glue on unprinted side at A
Fold A's together



Chinese Take Out Style Box

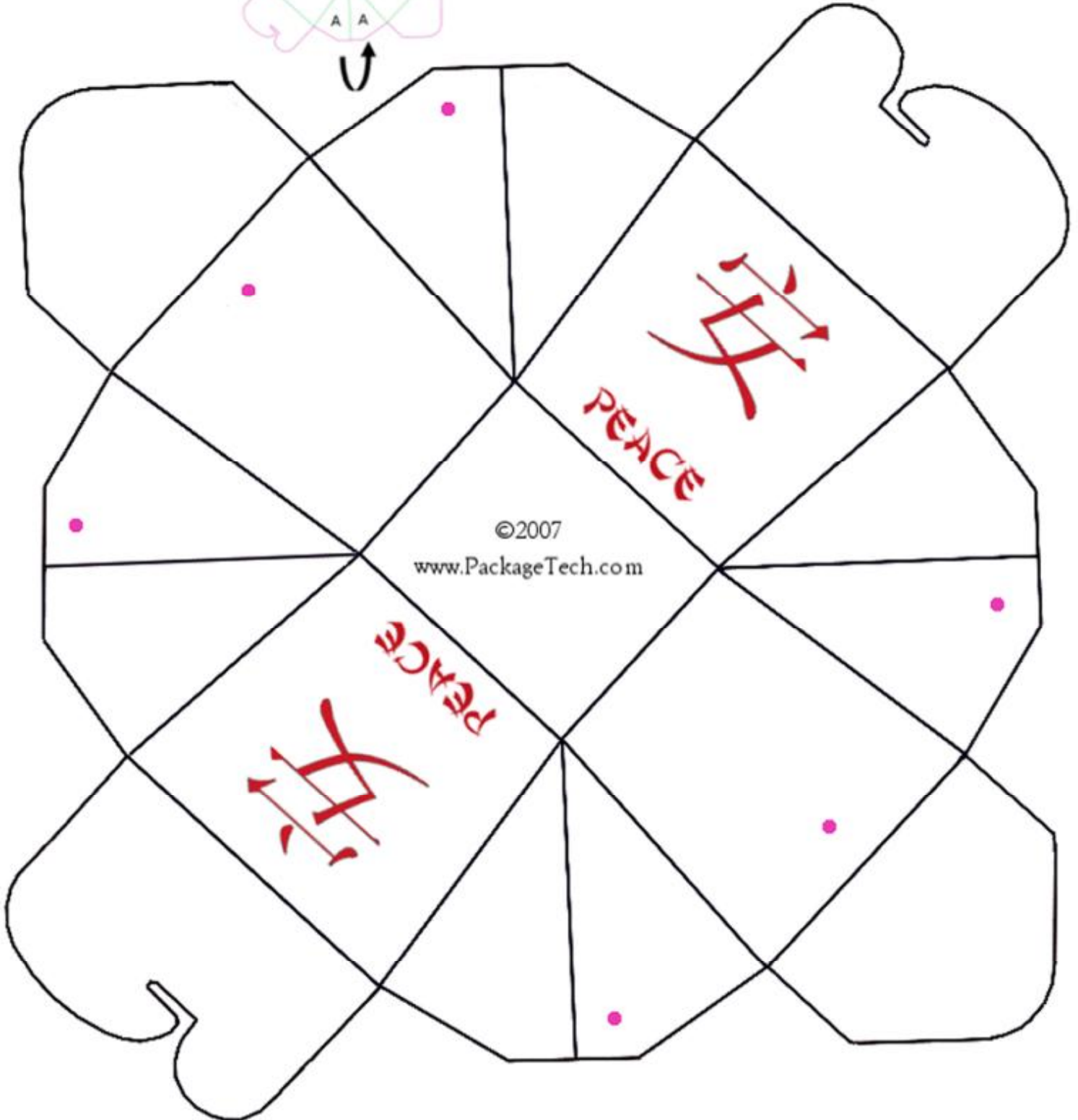
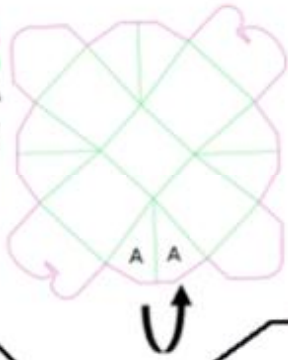
Score your lines well

Cut out box

We recommend using card stock for this box

Fold along all your score lines

Cut lines shown in **Pink**
Score lines shown in **Green**
Dot glue on unprinted side at A
Fold A's together



Chinese Take Out Style Box

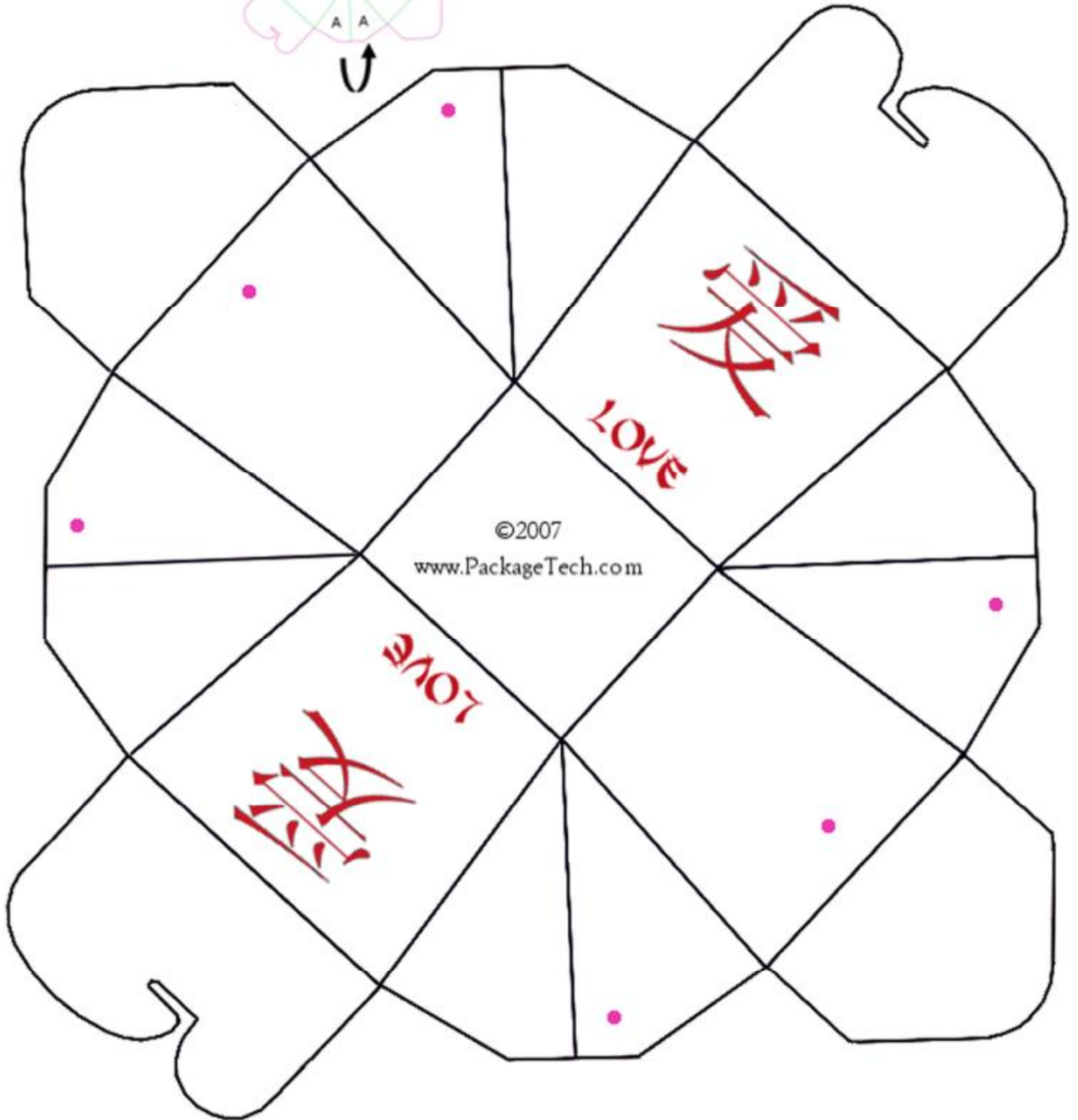
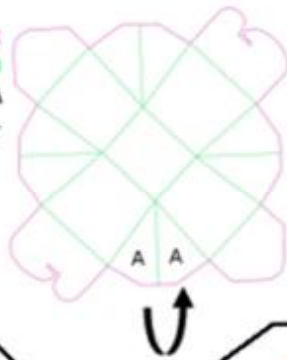
Score your lines well

Cut out box

We recommend using card stock for this box

Fold along all your score lines

Cut lines shown in **Pink**
Score lines shown in **Green**
Dot glue on unprinted side at A
Fold A's together



Chinese Take Out Style Box

Score your lines well

Cut out box

We recommend using card stock for this box

Fold along all your score lines

Cut lines shown in **Pink**
Score lines shown in **Green**
Dot glue on unprinted side at A
Fold A's together

